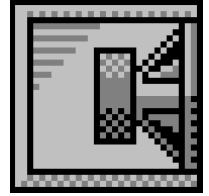


Custom Single-Tuned Bandpass Box Design

By Nexus3, u



Box Properties

--Description--

Name:

Type: Bandpass Single-Tuned Box

Shape: Prism, Bandpass with two chambers

--Box Parameters--

Chamber 1 - lower-frequency

Vb = 38.61 liters

Fb = 87.69 Hz

QL = 6.984

F3 = 52.63 Hz

Fill = none

Chamber 2 - upper-frequency

Vb = 28.97 liters

Fb = 90.55 Hz

QL = 6.984

F3 = 157 Hz

Fill = none

--Vents--

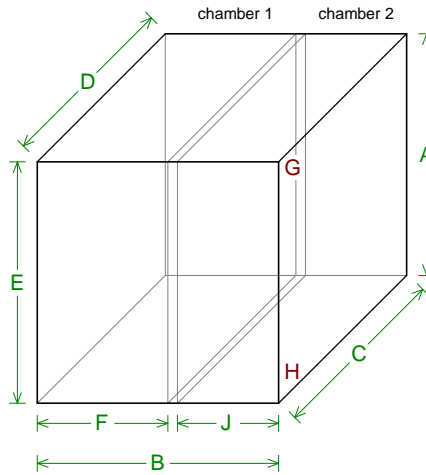
No. of Vents = 2

Vent shape = round

Vent ends = one flush

Dv = 100 mm

Lv = 100 mm



--External Dimensions--

A = 450 mm

B = 450 mm

C = 450 mm

D = 450 mm

E = 450 mm

--Internal Dimensions--

A = 414 mm

C = 414 mm

D = 414 mm

E = 414 mm

F = 225.3 mm

J = 170.7 mm

--Wall Thickness--

Outer Sides = 18 mm

Inner Baffle = 18 mm

--Angles--

G = 90°

H = 90°

Driver Properties

--Description--

Name:

Type: Standard one-way driver

--Configuration--

No. of Drivers = 1

--Driver Parameters--

Fs = 41 Hz

Qms = 5.82

Vas = 138 liters

Xmax = 2 mm

Sd = 510 sq.cm

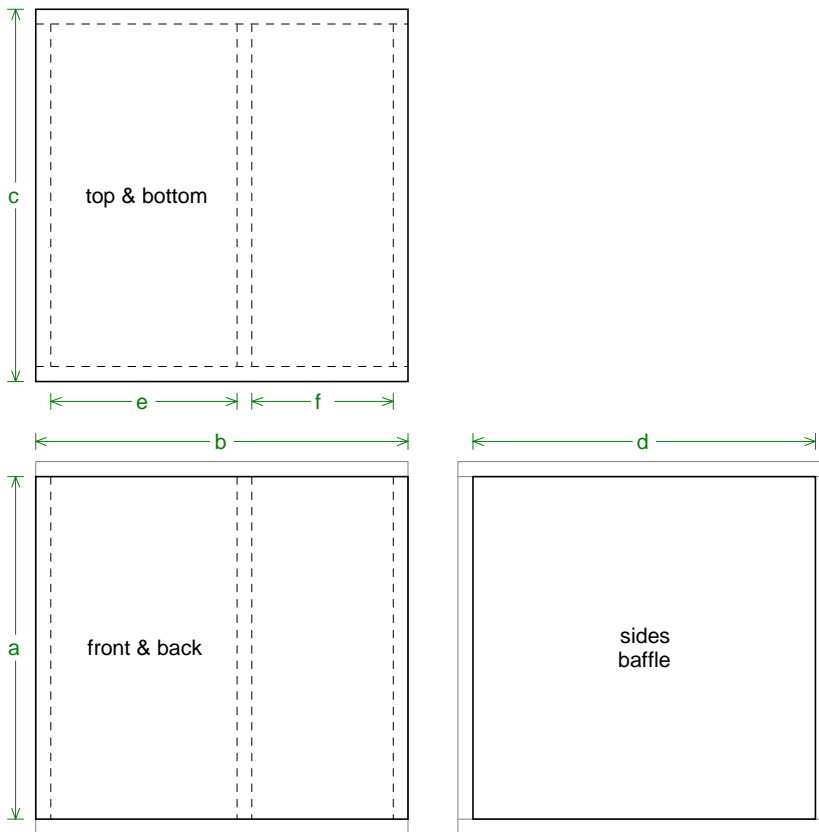
Qes = 0.37

Re = 5.6 ohms

Le = 0.83 mH

Z = 8 ohms

Pe = 100 watts



Box Parts

--Bandpass Prism Box Parts--

1 Top, 1 Bottom: height (c) = 450 mm
width (b) = 450, thickness = 18 mm

1 Front, 1 Back: height (a) = 414 mm
width (b) = 450, thickness = 18 mm

3 Sides: height (a) = 414 mm
width (d) = 414, thickness = 18 mm

Baffle Location: e = 225.3, f = 170.7 mm

--Vent Parts--

2 Ducts: (chamber 2)

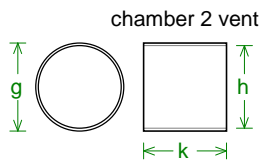
outside diameter (g) = 106.4 mm

inside diameter (h) = 100 mm

length (k) = 100 mm

--Driver Mounting--

Aim: ting:





Wiring Diagram

